

Anodized Partial Plus

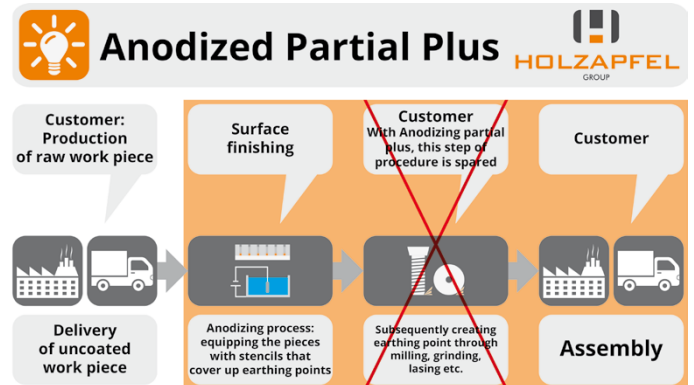
Some anodization applications require that the component is not completely anodized, for example when the component in question needs to remain partially conductive after anodizing (such as the earthing point on the protective casings of electrical devices). Till now it was only possible to create a conductive point by performing an additional process step.

However, with our enhanced Anodized Partial Plus (HT-C60) process we integrate the creating of a conductive earthing point in the coating process. The potential equalization point is created during anodizing and does not require separate reworking. The process innovation came about as the result of a special customer requirement from the automotive industry to produce casings for electronic components that regulate and control electric appliances.

Technical details:

- Creates a non-anodized earthing point during the anodizing process
- No reworking required – saves a complete process stage, lowering the risk of rejects
- Anodized surface with integrated potential equalization point is bondable and protected from corrosion
- Enhances the efficiency in the production process considerably, reducing costs and production time as well as saving energy
- Can be applied to hybrid materials
- Unsaturated colors or color mixtures are also possible, depending on customers' requirements
- Wear- and scratch-resistant aluminum oxide layer with hardness up to 500 HV
- Coloring, appearance and haptics reproducible

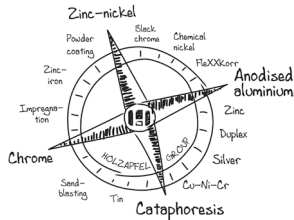
- Non-toxic
- High electrical insulation effect
- Very high temperature stability
- Work pieces free of damage and distortion



How you can benefit from working with the Holzapfel Group

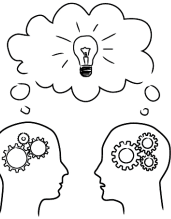
Your added value with the Holzapfel brand...

A broad range of surface processes to suit the widely varying specifications of your components



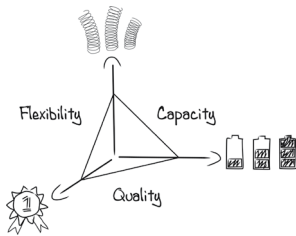
...and how YOU can benefit from it!

- Corrosion-resistant, decorative, functional and organic coating solutions for the automotive, mechanical engineering, medical, sanitary, electronics, optical, consumer goods, lifestyle and renewable energy industries
- Combination coatings in numerous variations available from one single supplier
- Consulting that always comes up with solutions "outside the box"
- ✦ Direct implementation instead of prolonged coordination: We provide you with the answers to ALL of your coating issues!



Developers and innovative driving force for all types of coating processes and surfaces

- Individually developed surfaces optimally adapted to suit the specifications of your components
- Future-oriented surface solutions that benefit from the experience and expertise gained in over 65 years of surface development
- ✦ We love to take on development projects that challenge our creative ability.



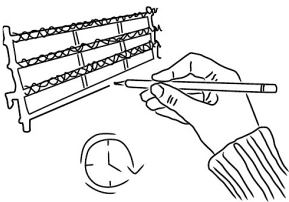
State-of-the-art systems engineering

- Large systems capacity
- Sufficient capacity for special dimensions of 2,300 mm x 4,000 mm and up to a weight of 750 kg
- Increased added value through additional assembly services
- ✦ ... and enough space to keep growing with your company's needs!



Coatings and processes in accordance with all common standards, such as those of the automotive industry

- Planning security for our customers is assured through detailed advance planning of each process stage
- Customers' coating requirements are met on a sustainable basis and much more
- ✦ Experience quality in every detail, from consulting and coating to packaging and shipment.



In-house frame development for fast, flexible development and manufacture of individual, component-specific frames

- Ability to react quickly to new products, short production start-up times
- Frames ensure cost-optimised assembly and coating processes
- ✦ More than 65 years of experience gained in the field of surfaces enable us to find creative solutions for all of your products.



Components management, logistics, packaging

- Coating as well as upstream and downstream value-added processes from one single source
- Fewer suppliers mean fewer processes to monitor and manage!
- One partner to contact
- ✦ We think ahead and manage processes on your behalf.



Lean management, CIP, value stream analysis

- Lean processes that concentrate on creating added value
- Transparency and outstanding quality by means of standards and continuous improvement processes
- KPI-based process management
- Detection of wastage by means of value stream analyses and elimination via continuous improvement processes
- ✦ We do not need encouragement when it comes to continuous improvement. At Holzapfel, CIP goes without saying and is an integral part of our company philosophy.

If the above-mentioned points have still not entirely convinced you, then please take a look at our customer reference projects at www.holzapfel-group.com/referenzen.